



A COMBINATION APPROACH TO **LEAFY SPURGE**

overdrive[®]
herbicide

Professional
Vegetation
Management

 **BASF**

The Chemical Company

Overdrive® Herbicide and Picloram

A Combination Approach to Leafy Spurge

Overdrive® herbicide is a proven, highly effective tool for postemergent control of annual, perennial and biennial broadleaf weeds in key noncropland areas, including pasture, rangeland and roadsides.

Combining the effectiveness of **Overdrive** with Tordon® 22K herbicide (picloram), a growth-regulator herbicide, results in better control of the toughest broadleaf weeds, like leafy spurge and Canada thistle. Plot studies show that **Overdrive** helps enhance and complement the activity of picloram, reducing the total amount of needed active ingredient, while still maintaining long-term control.

Generally applied in the spring and early summer to control leafy spurge, **Overdrive** combined with picloram provides a cost-effective solution for applicators seeking fast, long-term control of nuisance broadleaf weeds.

Technical Guide for Leafy Spurge Control

OVERDRIVE FOR IMPROVED LEAFY SPURGE CONTROL

- Apply 4 - 6 oz/acre of **Overdrive** + 8 - 16 oz/acre of picloram + 0.25% non-ionic surfactant.
- Apply in spring or early summer to flowering leafy spurge stands.
- **Overdrive** provides quick activity and cost-effective control into the next growing season by enhancing the activity of picloram.
- **Overdrive** enhances the activity of picloram and other growth-regulator herbicides, making **Overdrive** an excellent foundation product for control of leafy spurge and other broadleaf weeds.

Leafy spurge control with **Overdrive** + picloram



30 days after treatment

Research plot near Minot, ND treated with **Overdrive** at 6 oz/acre + picloram at 8 oz/acre on June 20, 2002. Photo taken July 24, 2002.

Leafy spurge control with **Overdrive** + picloram



1 year after treatment

Research plot near Towner, ND, treated with **Overdrive** at 4 oz/A + picloram at 8 oz/A on June 16, 2005.

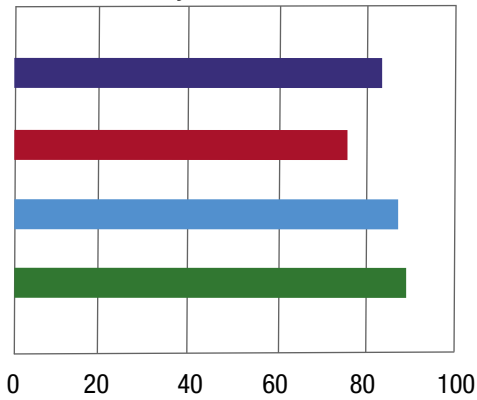


Thistle Control with Overdrive

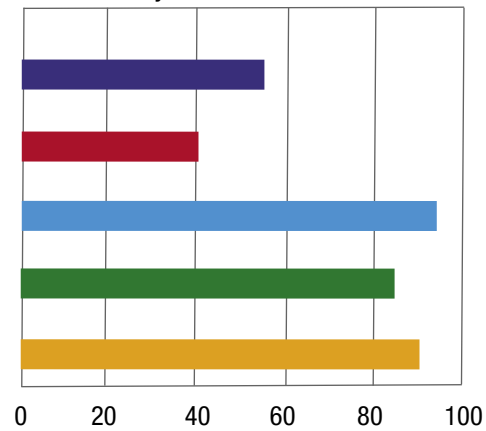


3 months after treatment
Canada thistle control plot with **Overdrive**

Leafy Spurge Control 90 days after treatment



Leafy Spurge Control 1 year after treatment



- picloram (32 oz/A)+2,4-D (32 oz/A)
- picloram (8 oz/A)+2,4-D (16 oz/A)
- Overdrive** (4 oz/A) + picloram (8 oz/A)
- Overdrive** (6 oz/A) + picloram (8 oz/A)

Source: BASF research trials, Minot, ND; Newcastle, NE

- picloram (32 oz/A)
- picloram (16 oz/A)+2,4-D (32 oz/A)
- Overdrive** (4 oz/A) + picloram (16 oz/A)
- Overdrive** (4 oz/A) + picloram (8 oz/A)
- Overdrive** (6 oz/A) + picloram (8 oz/A)

Source: NDSU Crop and Pest Report, June 16, 2005, Rod Lym, NDSU

Overdrive® Herbicide and Picloram

A Combination Approach to Leafy Spurge

Technical Guide for Controlling Thistles

ADDITIONAL GUIDELINES FOR USING OVERDRIVE ON PASTURE, RANGELAND AND ROADSIDES

- Apply **Overdrive** with a non-ionic surfactant at 0.25%; the use of a methylated seed oil may aid in uptake under dry conditions.
- **Overdrive** enhances the activity of other growth-regulator herbicides, making **Overdrive** an excellent foundation product for tank mixtures containing clopyralid (Transline®, Stinger®, Redeem®, Curtail®), picloram (Tordon, Grazon P+D®) and 2,4-D.
- **Overdrive** is very effective against numerous thistles, including musk thistle, bull thistle, Canada thistle and yellow starthistle.
- **Overdrive** controls a wide range of undesirable broadleaf weeds, including western ragweed, marestalk, kochia, Russian thistle and prickly lettuce.

For more information about **Overdrive** or any of our vegetation management products, call your nearest BASF ProVM sales specialist at **1-800-545-9545**, or visit www.vmanswers.com.

Always read and follow label directions.

Overdrive is a registered trademark of BASF. Transline, Stinger, Redeem, Curtail, Tordon, and Grazon P+D are registered trademarks of Dow AgroSciences, LLC. ©2006 BASF Corporation. All rights reserved. APN 05-15-078-0003B